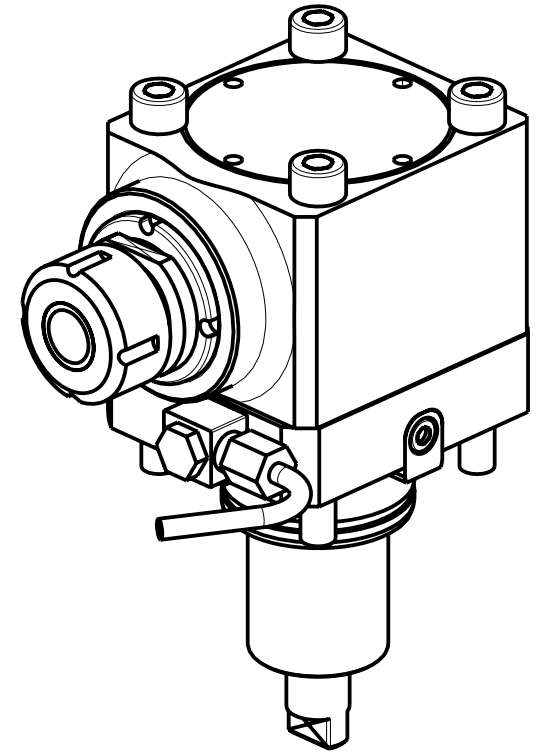
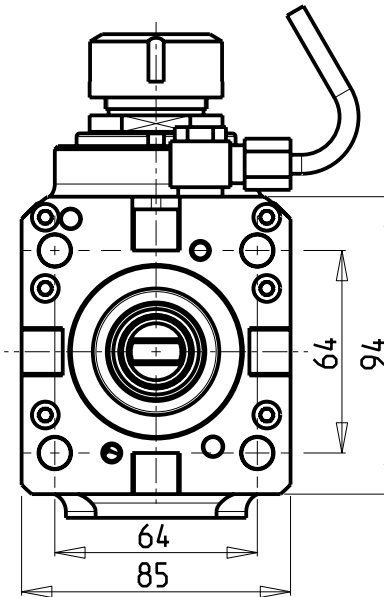
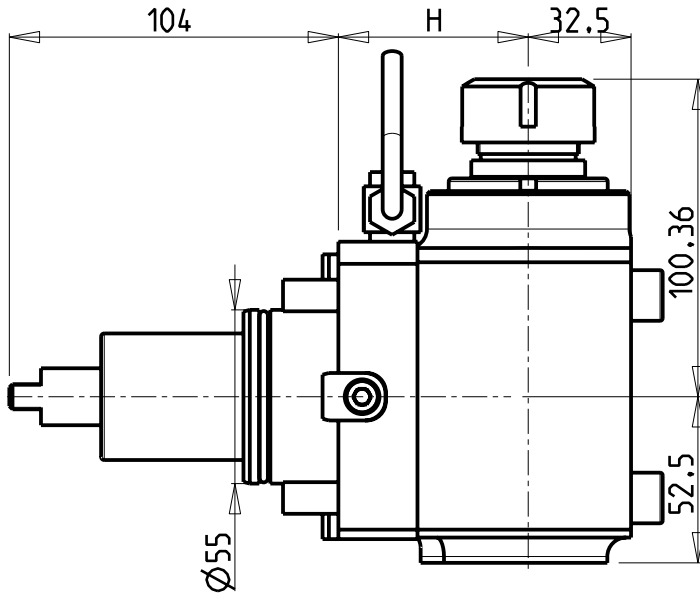


### ATTENZIONE - ATTENTION - ACHTUNG

- Su macchine MX1600ST e MX2100ST solo i motorizzati H=85 arrivano a centro mandrino
- The driven tools with H=85 reach the spindle axis only on lathes MX1600ST and MX2100ST
- Auf MX1600ST und MX2100ST Maschinen erreichen nur die angetriebenen Werkzeugen mit H=85 das Zentrum der Spindel



Cod. MT	Cod. DAEW 00	Mandrino Spindle Spindel	I	RPM	Reversibile lato mandrino/contromandrino Reversible sub/main spindle side Umkehrbare Spindel/Seite/ Gegenspindel/Seite	Lubrificazione int. Coolant through Innenkuehlung	Lubrificazione est. Ext. coolant Aussenkuehlung	H	CHIAVI NON INCLUSE Keys not included Schlüssel nicht einbegriffen	
0891225	-	ER25	1:2	12000	X		X	60	CHSTER25	CHUB36
0893625	-	ER25	1:2	12000	X		X	70	CHSTER25	CHUB36
0892425	-	ER25	1:2	12000	X		X	85	CHSTER25	CHUB36

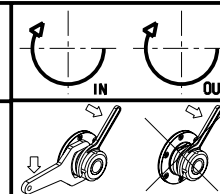
### DAEW 00 BMT 55

MOD: PUMA 230-240M/MS-280LM - PUMA 1500-2000-2500M/MS/Y/SY - PUMA TT1500-TT1800MS/SY  
PUMA TL2000-2500 (M) - MX1600/2100TS

MODULO MOTORIZ. ASSIALE MOLTIPLICATO I = 1:2

Geared-up axial driven tool I=1:2

Axial angetriebenes Werkzeug uebersetzt I=1:2



### M.T. srl

Via dei Tamerici 1/3  
Tel. 0541/956034-957884

Fax 0541/956341

47842 S. GIOVANNI IN M. (RN)

e-mail: mima@mtmarchetti.com

http://www.mtmarchetti.com

PRODUZIONE MODULI ROTANTI



PAGINA DW 0200-2-10