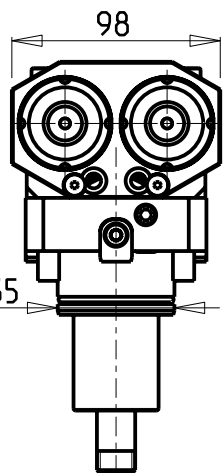
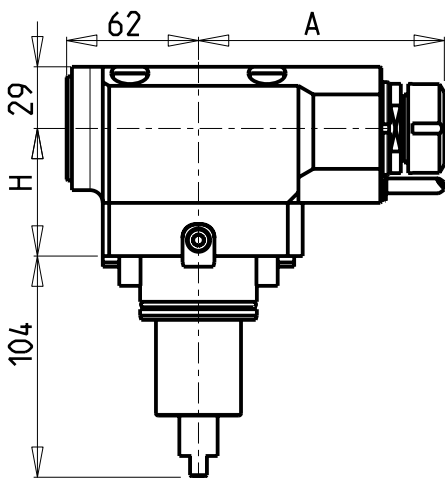


ATTENZIONE - ATTENTION - ACHTUNG

- Su macchine MX1600ST e MX2100ST solo i motorizzati H=85 arrivano a centro mandrino
- The driven tools with H=85 reach the spindle axis only on lathes MX1600ST and MX2100ST
- Auf MX1600ST und MX2100ST Maschinen erreichen nur die angetriebenen Werkzeugen mit H=85 das Zentrum der Spindel

ATTENZIONE - ATTENTION - ACHTUNG

- Per lo smontaggio degli utensili utilizzare sempre la chiave di contrasto come indicato nel manuale d'uso.
- For disassembly of the tools use always the contrast key as mentioned in the user instructions.
- Fuer das Abmontieren der Werkzeuge immer den Gegenschlüssel benutzen wie in der Bedienungsanleitung erwaehnt.



| Cod. MT | Cod. EPPINGER | Mandrino Spindle Spindel | I | RPM | Reversibile lato mandrino/contromandrino Reversible sub/main spindle side Umkehrbare Spindelsete/Gegenspindelsete | Lubrificazione int. Coolant through Innenkuehlung | Lubrificazione est. Ext. coolant Aussenkuehlung | A | H | CHIAVI NON INCLUSE Keys not included Schlüssel nicht einbegriffen | |
|-------------|---------------|--------------------------|-----|------|---|--|--|--------|----|---|------------|
| DW 00100216 | - | ER16 | 1:1 | 6000 | X | | X | 115.15 | 60 | CHMNER16 | CHUB17 |
| DW 00100225 | - | ER25 | 1:1 | 6000 | X | | X | 115.61 | 60 | CHSTER25 | MNL0210007 |
| DW 00102216 | - | ER16 | 1:1 | 6000 | X | | X | 115.15 | 70 | CHMNER16 | CHUB17 |
| DW 00102225 | - | ER25 | 1:1 | 6000 | X | | X | 115.61 | 70 | CHSTER25 | MNL0210007 |
| DW 00101216 | - | ER16 | 1:1 | 6000 | X | | X | 115.15 | 85 | CHMNER16 | CHUB17 |
| DW 00101225 | - | ER25 | 1:1 | 6000 | X | | X | 115.61 | 85 | CHSTER25 | MNL0210007 |

NEW

NEW

NEW

NEW

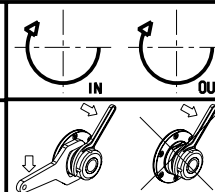
DAEWOO BMT 55

MOD: PUMA 230-240M/MS-280LM - PUMA 1500-2000-2500M/MS/Y/SY - PUMA TT1500-TT1800MS/SY
PUMA TL2000-2500 (M) - MX1600/2100TS

MODULO MOTOR. ASSIALE 2 USCITE

Axial single side twin head driven tool

Axial angetriebenes Werkzeug 2 Ausgaenge ueberlagert



M.T. srl

Via dei Tamerici 1/3
Tel. 0541/956034-957884
Fax 0541/956341

47842 S. GIOVANNI IN M. (RN)
e-mail: mtma@mtmarchetti.com
http://www.mtmarchetti.com

PRODUZIONE MODULI ROTANTI



PAGINA DW 0260-2-10